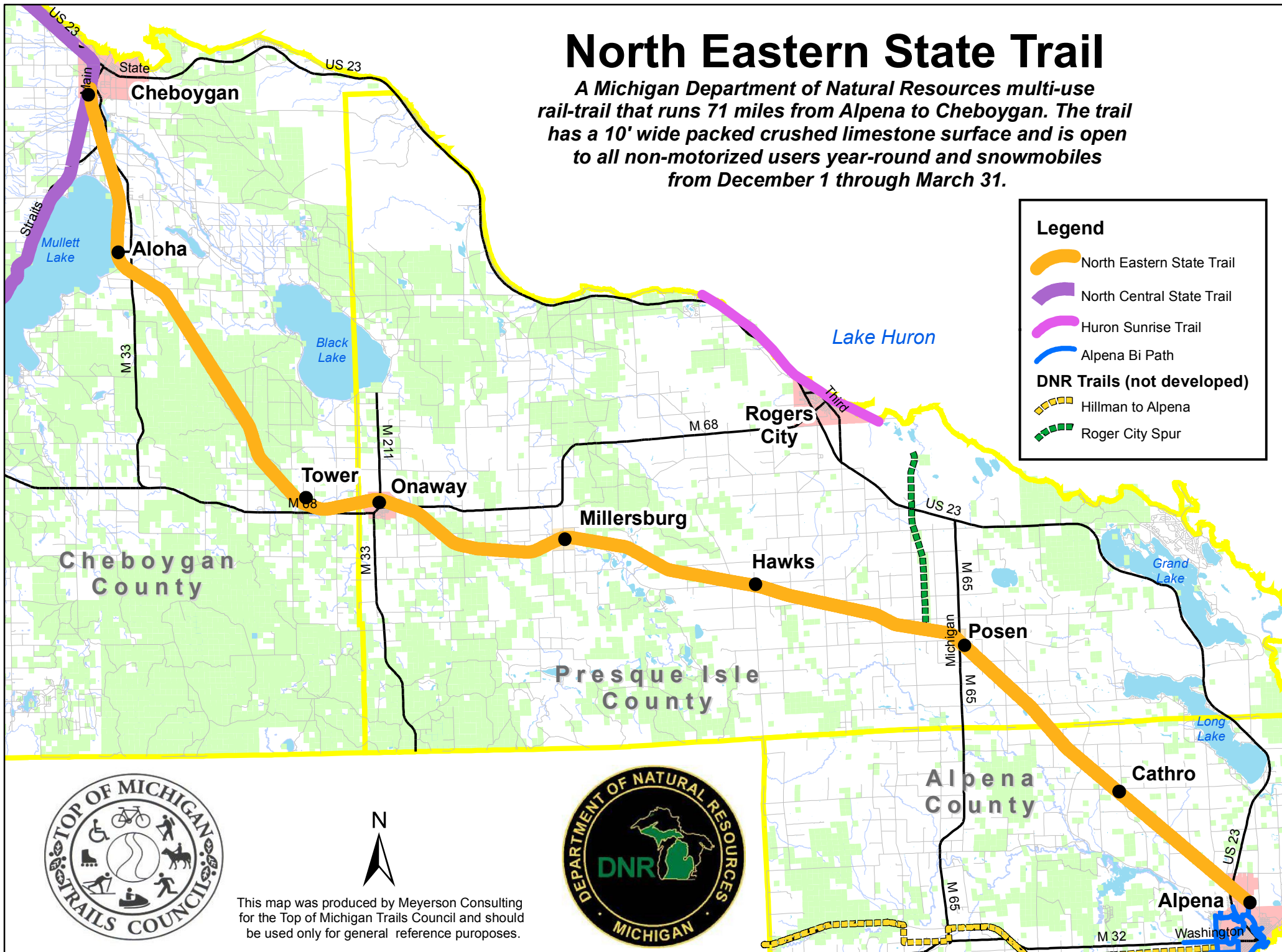


# North Eastern State Trail

*A Michigan Department of Natural Resources multi-use rail-trail that runs 71 miles from Alpena to Cheboygan. The trail has a 10' wide packed crushed limestone surface and is open to all non-motorized users year-round and snowmobiles from December 1 through March 31.*

## Legend

- North Eastern State Trail
- North Central State Trail
- Huron Sunrise Trail
- Alpena Bi Path
- DNR Trails (not developed)**
  - Hillman to Alpena
  - Roger City Spur



This map was produced by Meyerson Consulting for the Top of Michigan Trails Council and should be used only for general reference purposes.